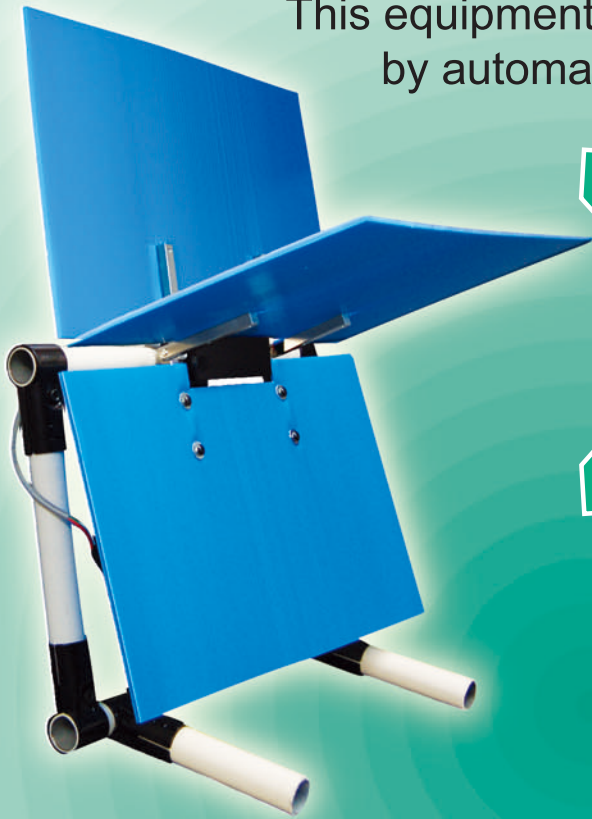


# POKAYOKE SHUTTER STEP4

## Human Error is inevitable.

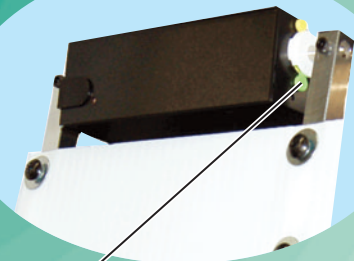
This equipment can prevent picking up wrong parts by automatically opening and closing the door.



※Plastic plate is not included.

The device prevents workers from picking up wrong parts.

When it's closed



When it's opened



You can adjust the opening and shutting angle with DIP switch in the body, depending on size of parts and height of shelves.

(before installation)



(after installation)



## Feature

- ⊙The device can be used to prevent wrong parts from not only being picked, but also being stored onto shelves.
- ⊙A number of devices can work simultaneously due to low consumption of electricity.
- ⊙Easy installation.(Pokayoke Shutter can work by just connecting with I/O unit to existing system.)
- ⊙The angle can be adjusted by using the knob on the side.
- ⊙The length of time (during which a panel is opened) can also be adjusted 1 sec to 10sec. (Therefore, you can store long or heavy objects which it may take longer to take out)

## Specification

- MODEL : APG-4
- POWER : 24V DC
- CURRENT CONSUMPTION:0.4 A or less
- Inrush current:0.6 A or less
- Weight:0.5 kg
- Max Torque:1.2 kg · cm
- Opening and closing durability:One million times of use
- The length of time when closing:1 to 10seconds (adjustable)

⊙Recommended shutter (Material:5mm plastic thickness of corrugated cardboard)

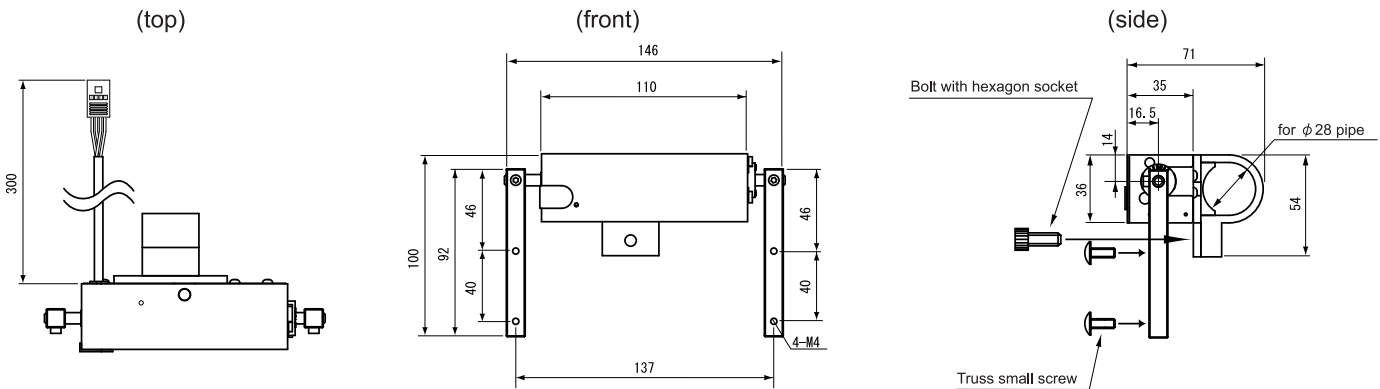
※Please inquire the size separately.

What's included

For main body installation) Bolt with hexagon socket:M6 × 15(1 per unit)

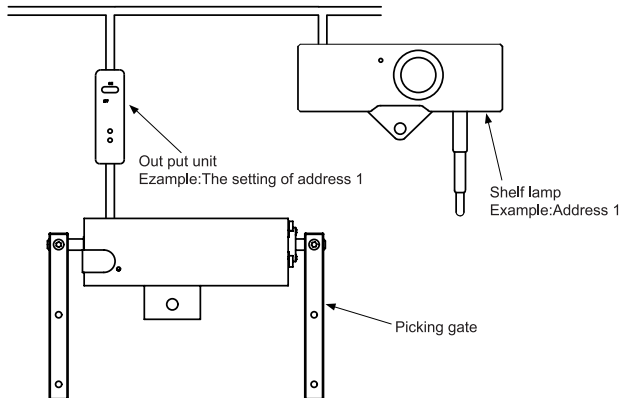
For shutter installation) Truss small screw:M4 × 10(4 per unit)

## Outlook



## Wiring diagram

← It is connect with the FA control equipment.

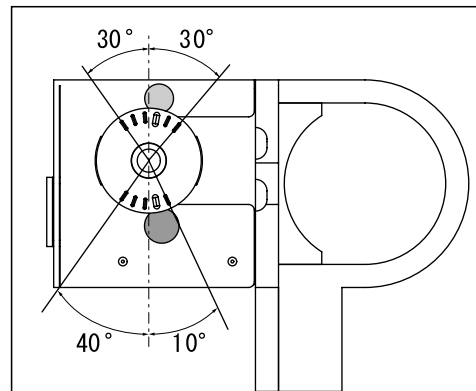


※Pokayoke Shutter and existing shel lamp can be linked by adjusting the signals(address) from I/O unit, thus, those devices can be activated simultaneously.

A standard connector of the harness is connector(SL-CP2) for S-LINK. Please cut the S-LINK connector when the other conserve wiring I/O units are used.

## The angle of the opening and closing

The knob(side of the body)



※When installed, the angle is set at 40°.

(The above picture shows you the possible angles of opening and closing.)

If you have any questions, please contact.

Manufacturer: **oneA Co.,Ltd.**

Main office : 3-30-20, Hanaten-Higashi,  
Tsurumi-ku, Osaka-city, Osaka  
538-0044, Japan  
TEL.+81-6-6962-7771

URL : <http://www.one-a.co.jp>

Sendai Sales Office  
Tokyo Sales Office  
Nagoya Sales Office  
Fukuoka Sales Office  
Osaka Sales Office

Higashi Osaka Office  
Main Factory  
Tsurumi Factory



※For the sake of improvement, further modification may be implemented without announcement.  
ISO:Main Office, Main Factory, Higashi Osaka Factory, Tsurumi Factory

2010.05.oneA