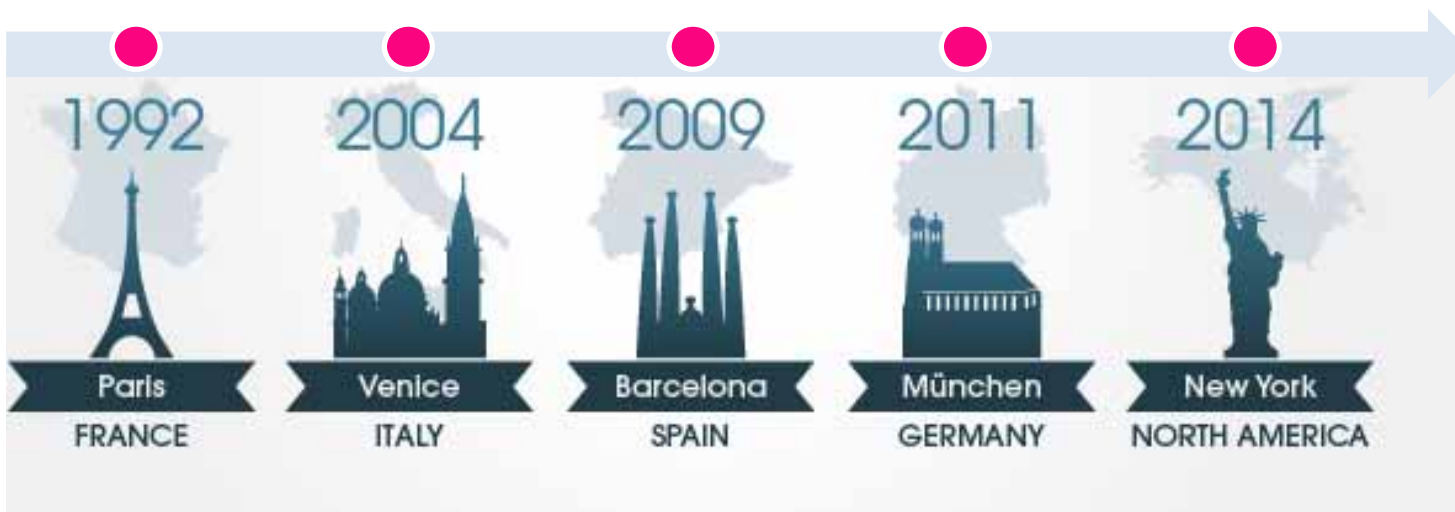


unimec[®]

Ars Mechanica



BORN ITALIAN, WE GROW UP WORLDWIDE



NUMBERS

- **33** years of experience
- **25** employees
- **35** skilled workers
- 2013 production: more than **25.000** units
- Registered trademark in all **Europe** ®
- **5** subsidiaries
- **50** worldwide retailers



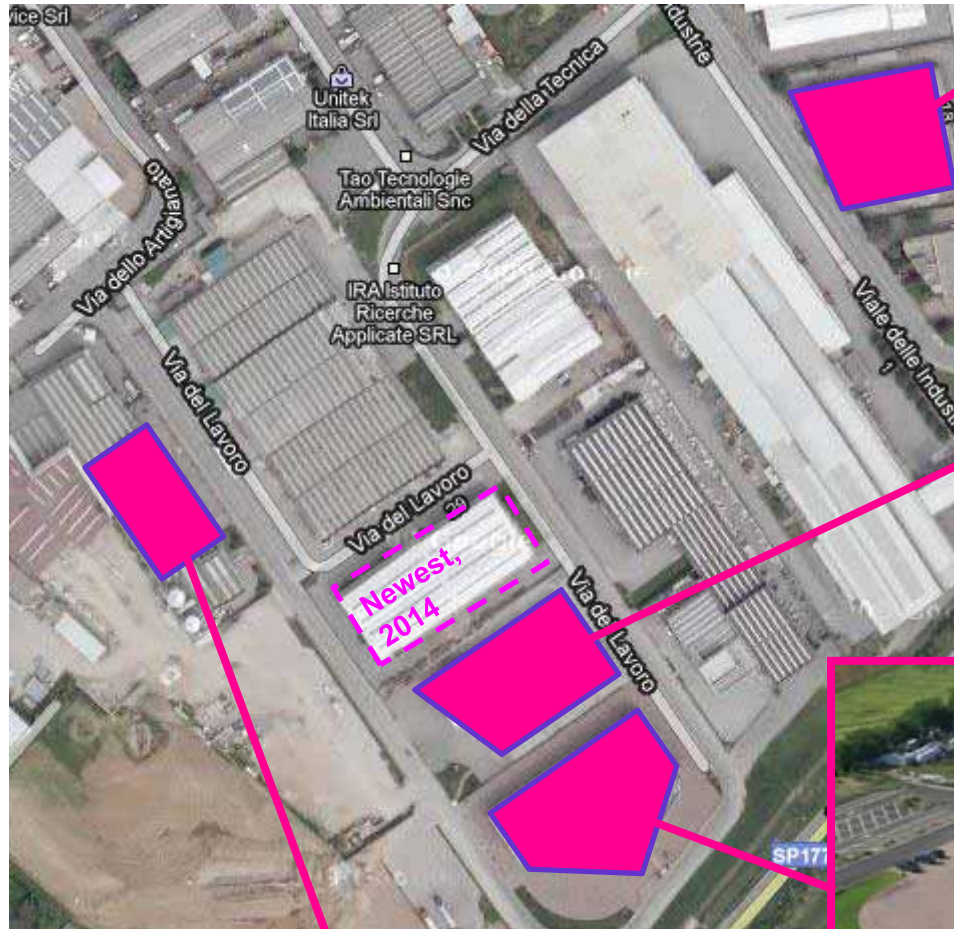
UNIMEC HEADQUARTER



**20.000 mq total
(11.000 mq covered)**



FOUR BUILDINGS

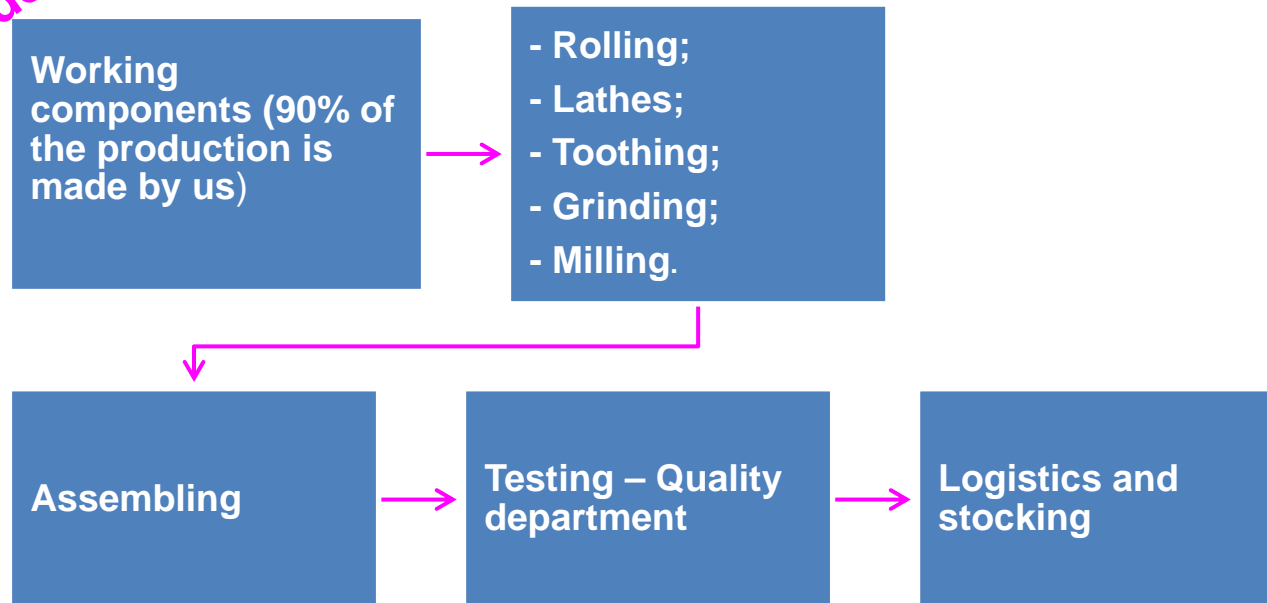


CASTING STOCKAGE



PRODUCTION: SLIM, EFFICIENT AND SKILLED

100% Made in Italy



INSIDE THE FACTORY



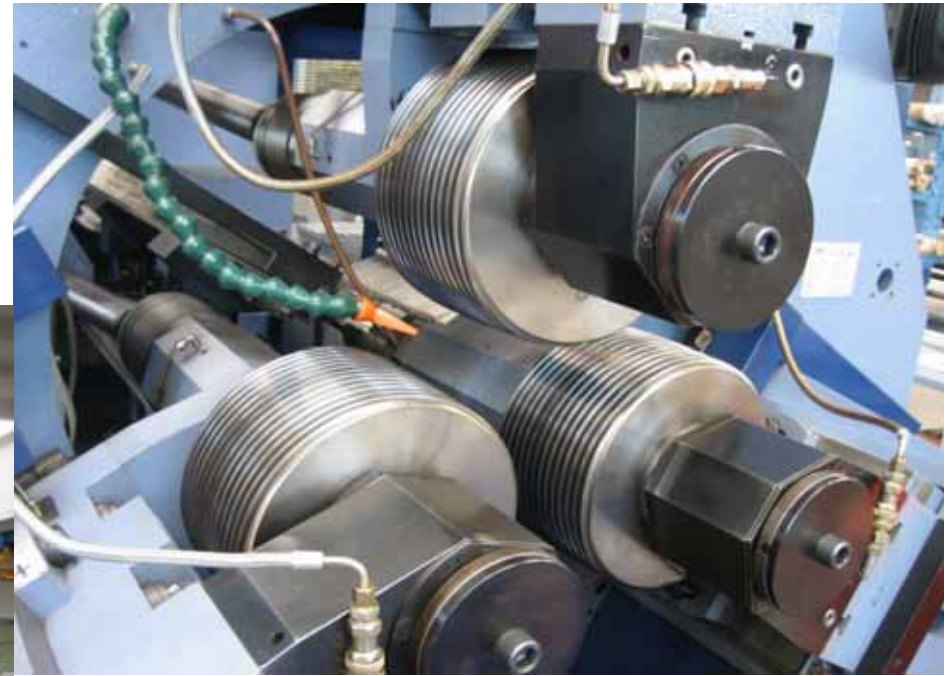
INSIDE THE FACTORY



INSIDE THE FACTORY



ROLLING



LATHES



TOOTHING



GRINDING



STOCKING



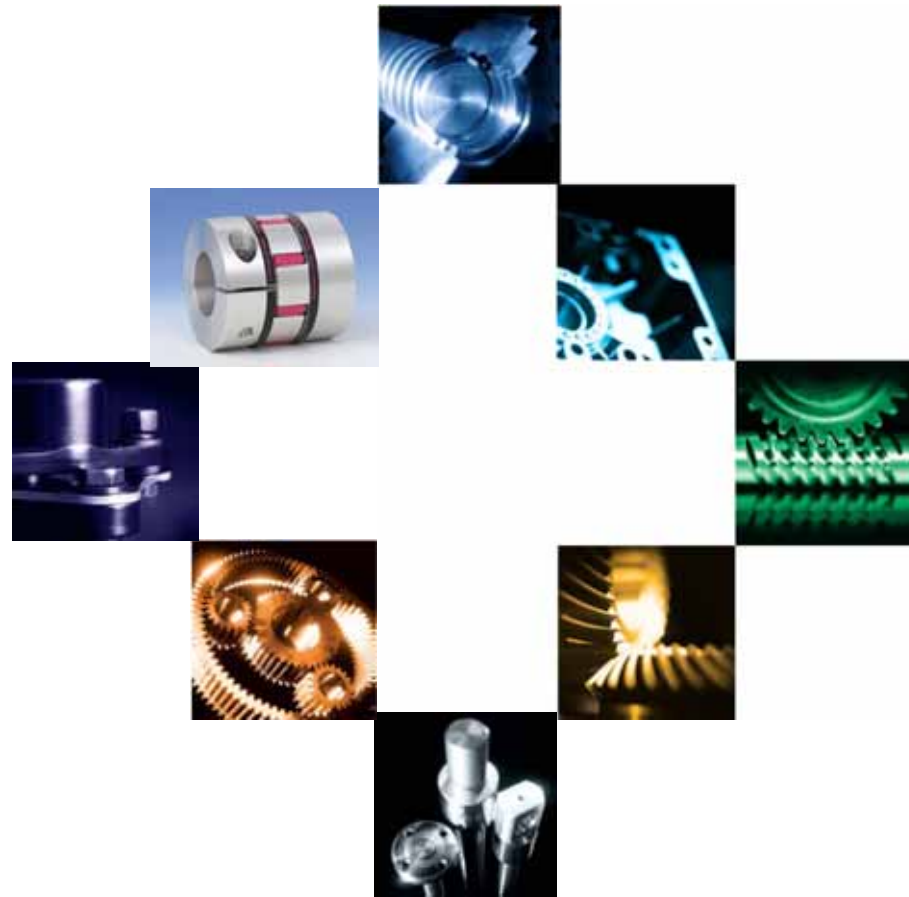
ASSEMBLING



TEST ROOM



RANGE OF PRODUCTS



MECHANICAL SCREW JACKS



- **Model:** TP, TPR;
- **Complete range:** 14 sizes (from 18x3 to 250x22). Special spindle: diameters and pitches on demand
- **Carrying capacity:** from 500Kg to 200 Tons
- **Spindle length:** from few mm to 12 metres
- **Accessories:** Protection, Mounting (standard and special)



HIGH QUALITY MATERIALS



- **16NiCr4** casehardened and grinded worm screw → high geometrical precision, high wear resistance, high superficial hardness
- **CuAl10Fe2** worm wheel → self lubricant performances (Cu) and high mechanical resistance (Al and Fe)
- **Rolled C45** spindle → superficial hardening, crystal lattice continuity, better finishing, roughness equal to grinding, better wear resistance (due to bench hardening)
- **GLJ 250** completely machined carter (over 9010 size carter is in electronically welded steel)

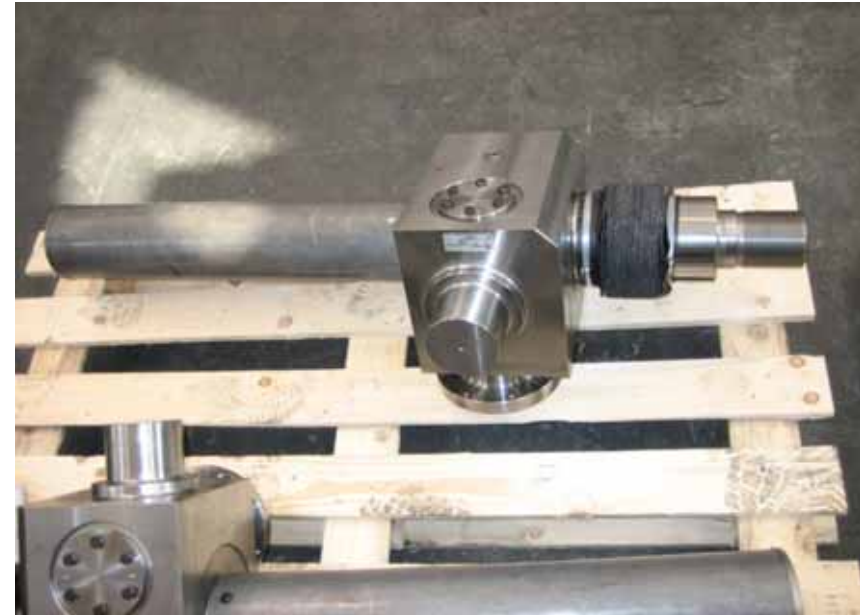


SPECIAL IS ORDINARY



Screw jack with incorporated load cell

38NiCrMo5 Carter with enbloc pins



ALEPH SERIES



- Unimec screw jacks in polymer: **3** sizes, various ratios, load **from 700 daN up to 1.800 daN** per single jack.
- It can work dry (**without lubricant**).
- Direct motor connection.
- **Stainless steel configuration** for food industry.
- **Cheaper** with maintaining the **high quality** of the products.



SCREW JACKS FOR BALL SCREWS



- It is **reversible**: it has high efficiencies and so it's good for heavy cycles (high speeds).
- It is **universal**: three only sizes are enough for the assembling of 25 different sizes of ball screws, of whatever brand you desire.
- It is **unique**: there isn't a screw jack builder, except Unimec, that has designed a jack specifically for a ball screw.
- It is **technical**: it's important to propose it to customers but ask for technical office support.



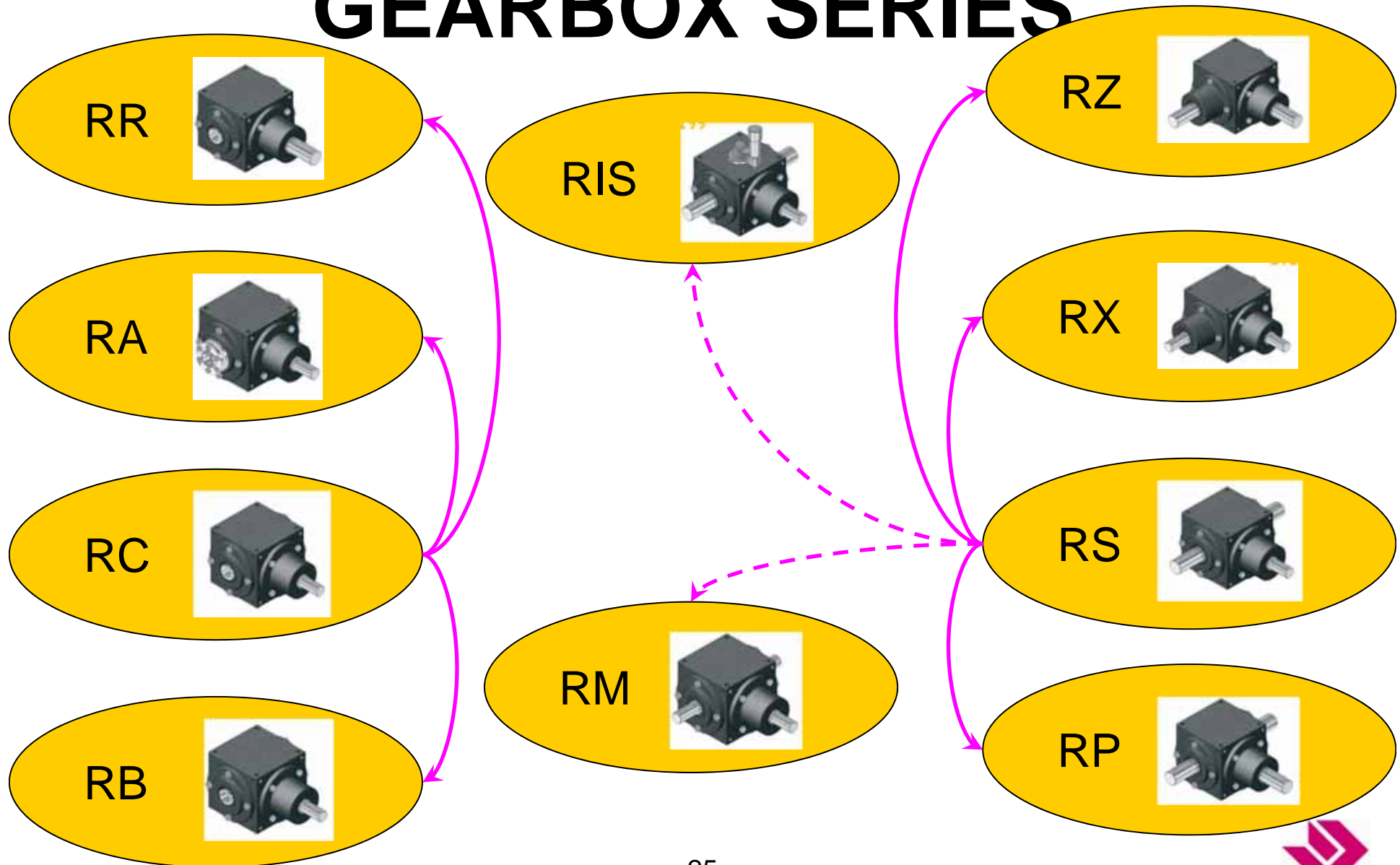
BEVEL GEARBOXES



- **Power:** up to 1.650 kW
- **Gear ratio:** from 1/1 to up to 1/12.
- **Gleason tothing:** thanks to its geometry, it better distributes tooth strength during transmission: helix allows a softer meshing and variable thickness makes tooth more rugged where it needs (at its base).
- For all models it's possible to apply **motor flanges (standar/special):** Brushless motor, Nema motors, reducers, hydraulic motors.



GEARBOX SERIES



SPECIAL IS ORDINARY



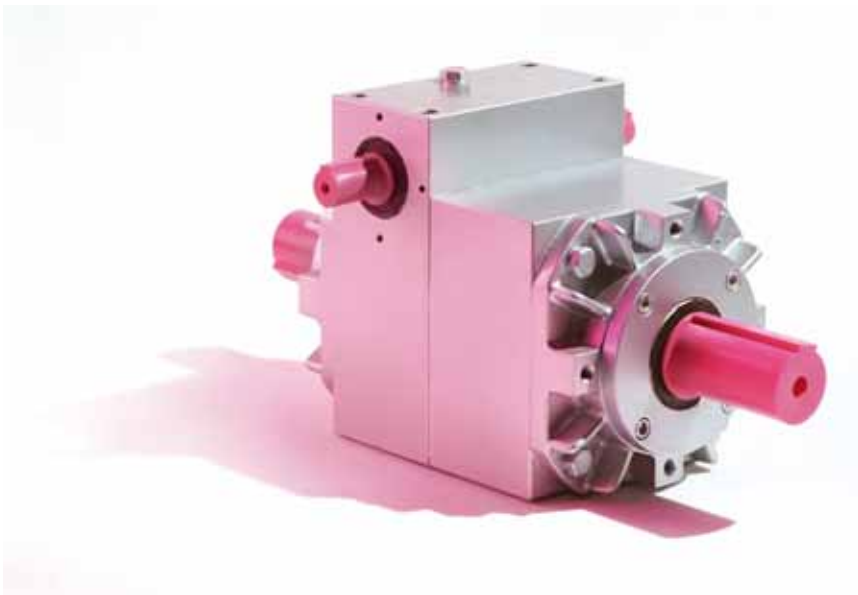
STAINLESS STEEL SERIES



- **204, 306 and 407 sizes** (screw jacks) and **86, 110 and 134** (gearboxes) are available, by series, completely in **AISI 316** (+40% expensive on the most common AISI 304)
- Every component can be realized in stainless steel, but with growing times and prices



SPEED MODULATION GEARBOXES



- **3 sizes:** 32,42 e 55
- **5 model** and **85 construction forms.**



COUPLINGS



- **High torsion stiffness** blade couplings.
- **Resistance** to corrosive agents, absorption of vibrations;
- Use in **any temperature**;
- **Absorb** axial and parallel movement errors.



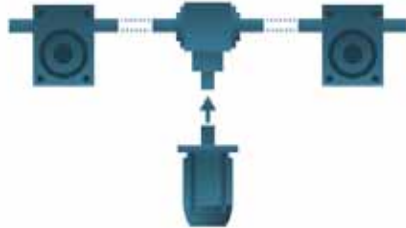
- **R+W PARTNERSHIP** = top qualities couplings and shaft;
- **Resistance** to corrosive agents, absorption of vibrations;
- Use in **any temperature**;
- **Absorb** axial and parallel movement errors.



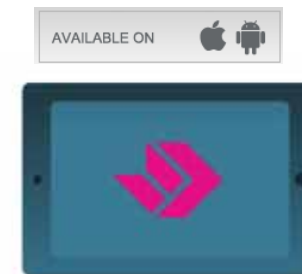
CUSTOMER CARE

PRE SALES

Size finder



App



Summary brochure



3D Archives



CUSTOMER CARE

PRE SALES

www.unimec.eu



- Five languages;
- Three landing page (Turkish, Czech and Korean);
- Complete;
- Always actual (with news) = dynamic factory
- Free 2D and 3D drawing download



CUSTOMER CARE

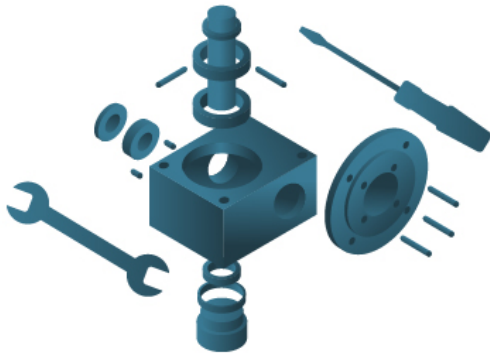
PRE SALES



CUSTOMER CARE

AFTER SALES

Top repairability



Warranty



CUSTOMER CARE

NORMS

- **ROHS** (applied)
- **REACH** (non dangerous substances)
- **MACHINES**
- **ATEX** (always fullfill the questionnaire)



Fields

Aerospace

Packaging

Food

Steel

Renewable energy

Printing

Pharmaceutical

Telecommunication

Army

Transports



APPLICATIONS



OUR PRODUCTS ARE USED TO BUILD

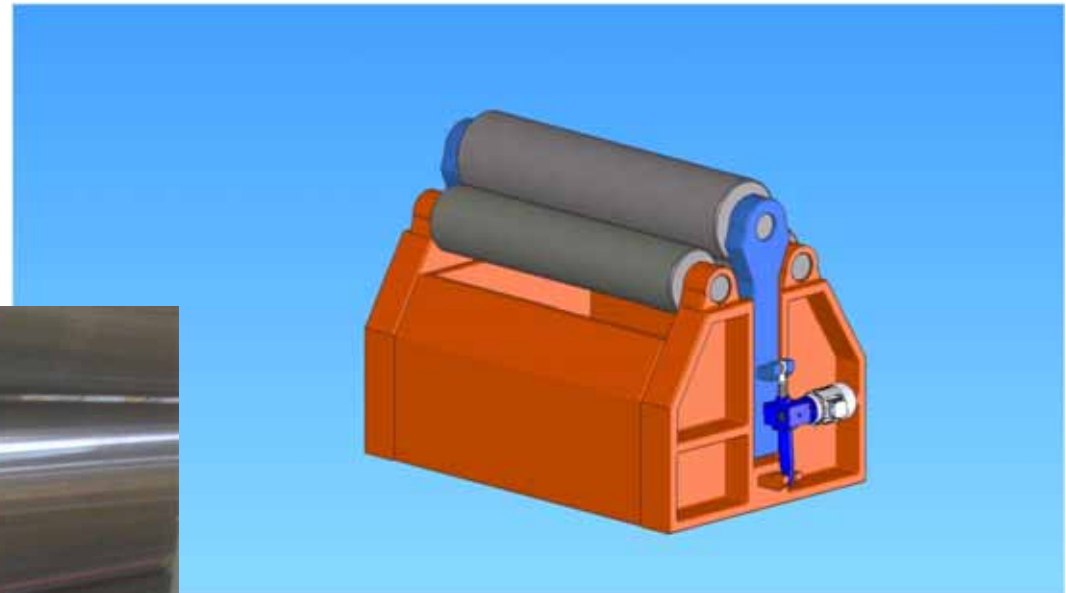


SOLAR PANEL

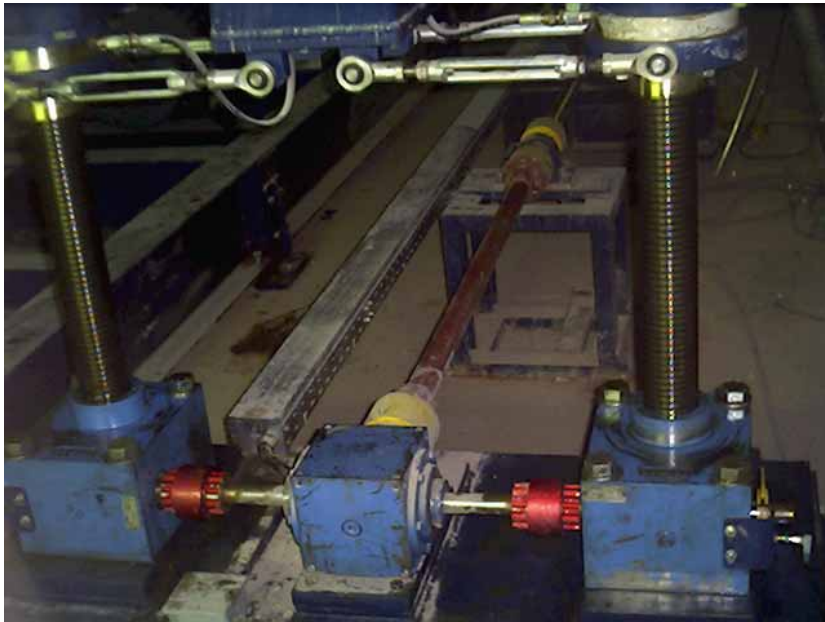


OUR PRODUCTS ARE USED TO BUILD

BENDING MACHINE



OUR PRODUCTS ARE USED TO BUILD

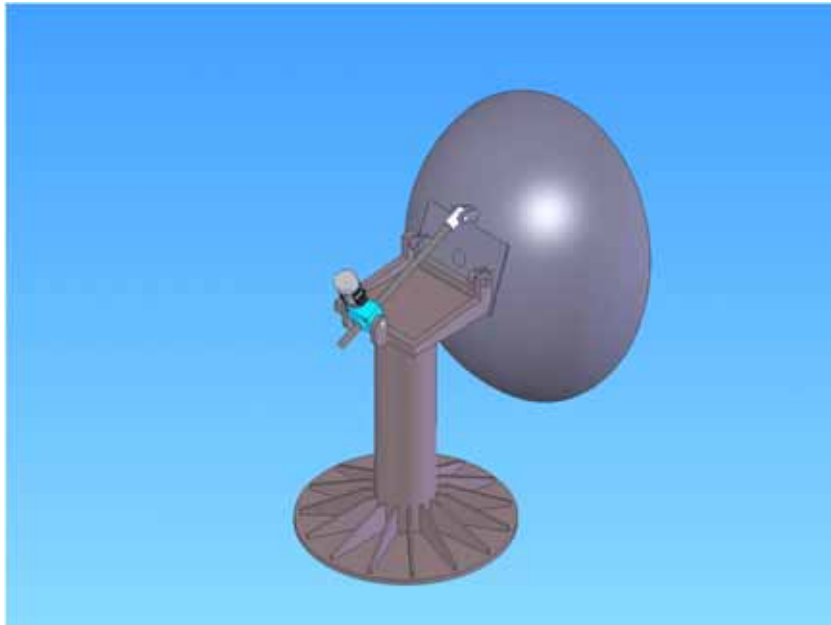


**PANTOGRAPH DRIVE
MACHINES**



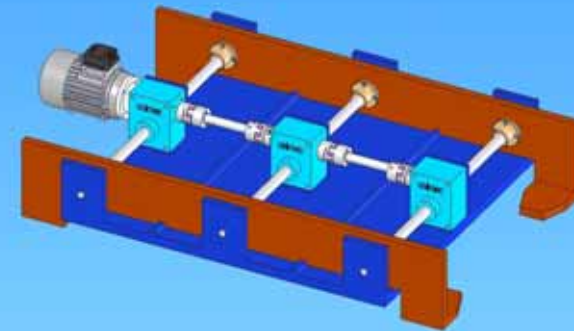
OUR PRODUCTS ARE USED TO BUILD

SAT ANTENNAS



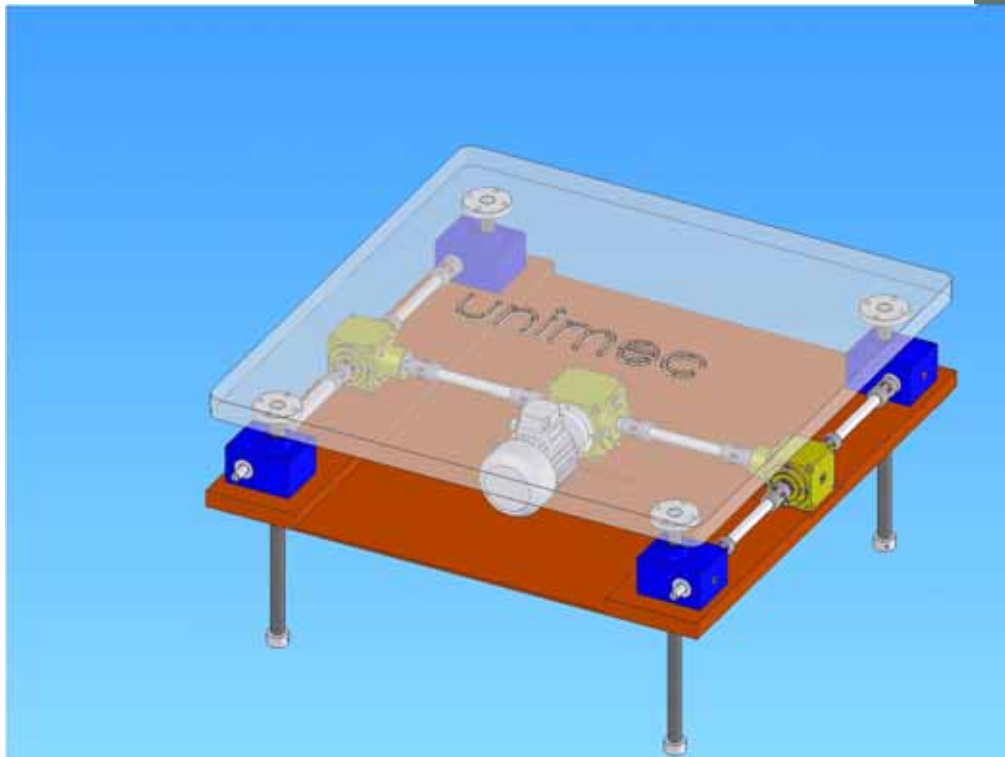
OUR PRODUCTS ARE USED TO BUILD

FORKS



OUR PRODUCTS ARE USED TO BUILD

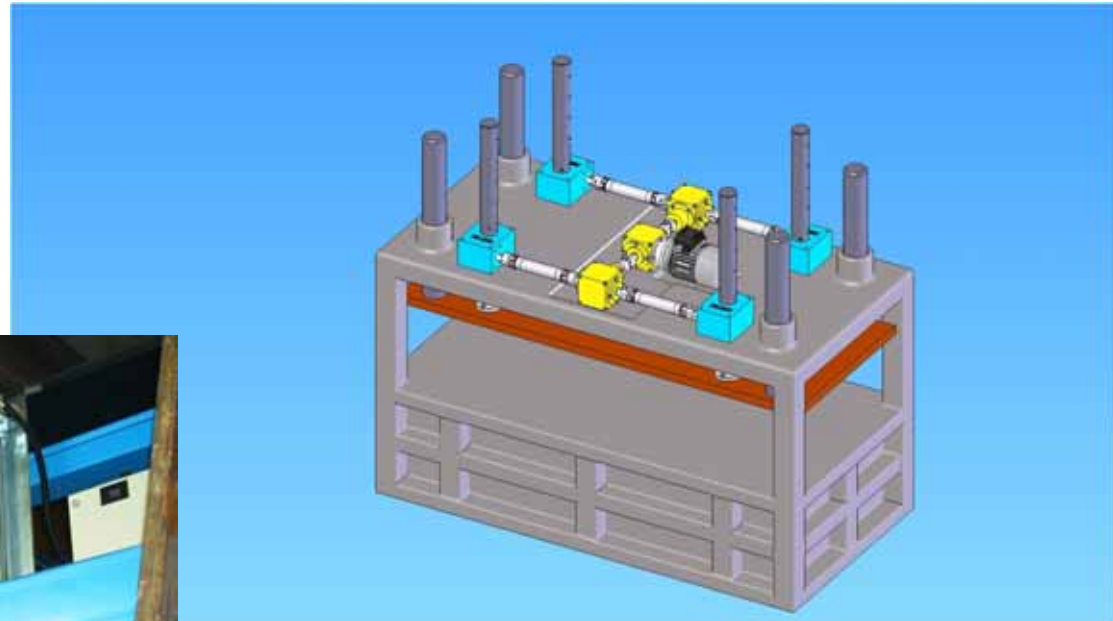
PLATFORMS



OUR PRODUCTS ARE USED TO BUILD

BUILD

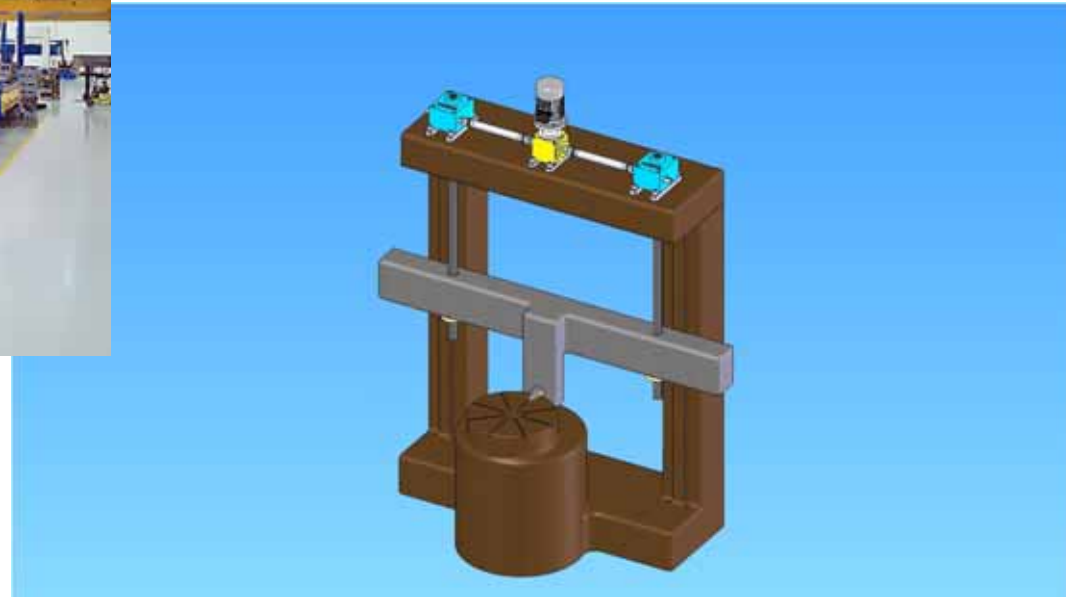
PRESSES



OUR PRODUCTS ARE USED TO BUILD



VERTICAL LATHES





MAIN APPLICATIONS



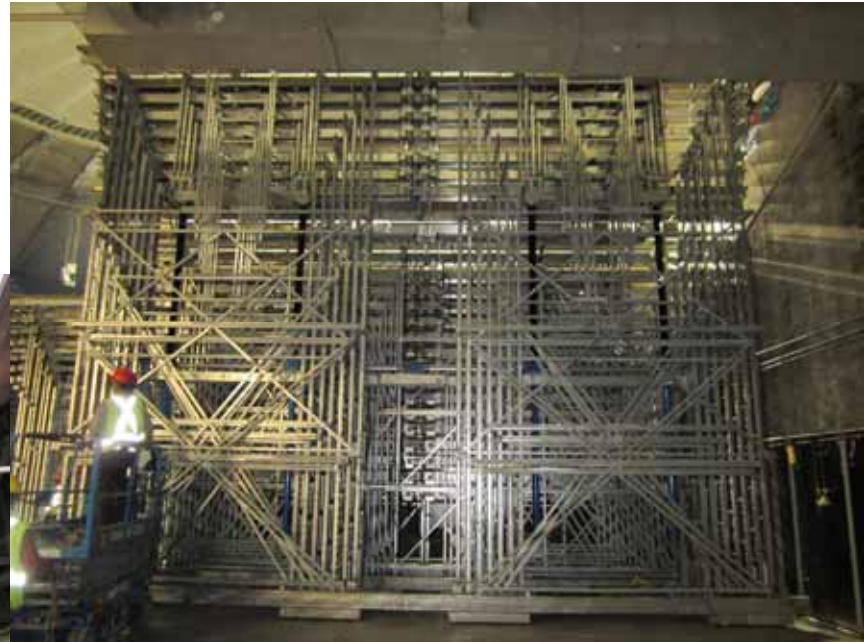
AIRCRAFT (Airbus A380)



STEEL PLANTS



STADIUM BLACHERS



CABLEWAYS

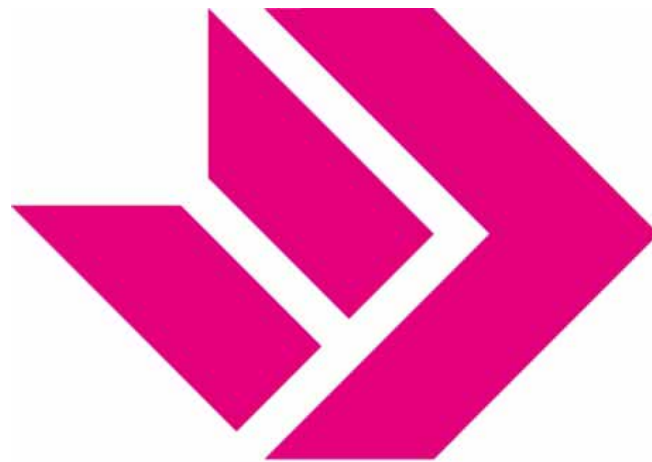


BRIDGE LIFTING



BRIDGE LIFTING





unimec®

Unimec S.p.A.
Via del Lavoro 20, 20865 Usmate Velate
(MB) Italy
Tel.+39 039.6076900
Fax. +39 039.6076909

